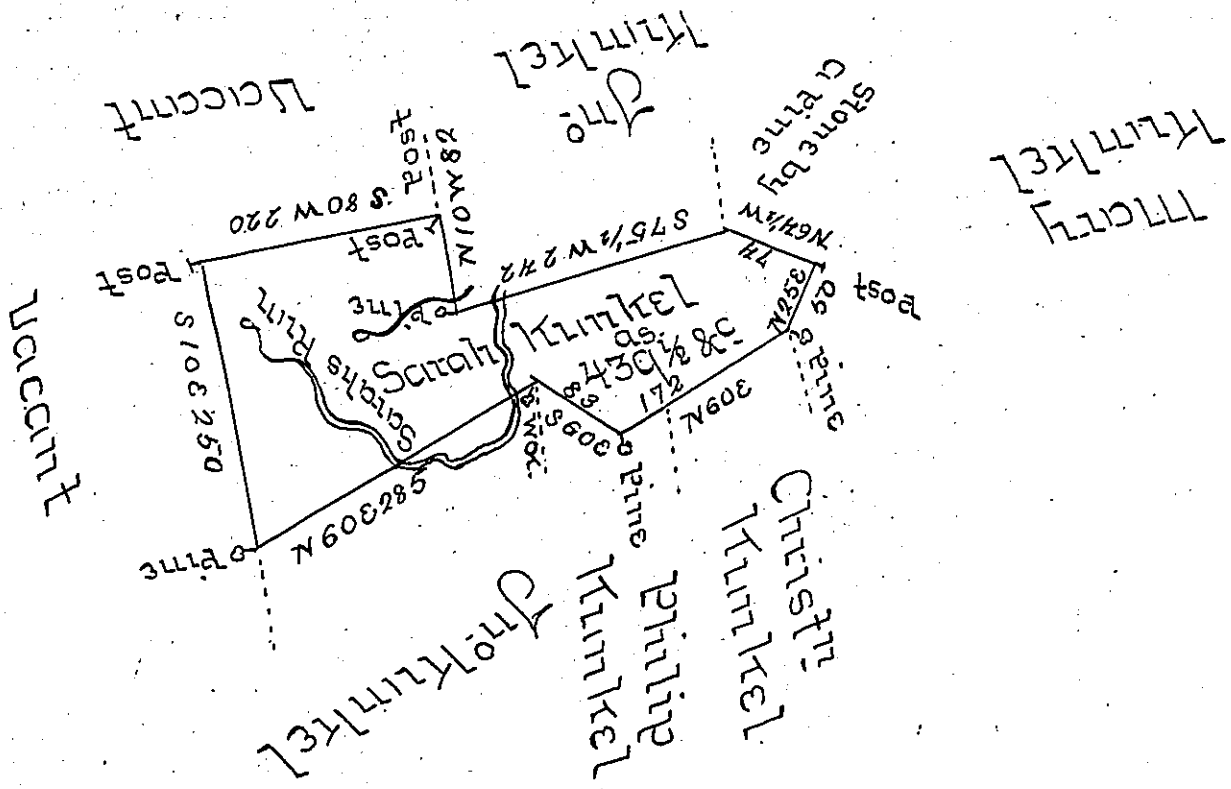


Hazle
Luzerne



A Draft of a tract of land Called "Coal Spring" Situate
 on a branch of black Creek Called Sarahs Run in
 Catawissy Township & County of Northumd Con-
 taining four ^{Hundred} & thirty Nine Acres 1/2 & Allowd Sur-
 veyed for Sarah Kunkel the 13th Day of October
 1790bl.) in Pursuance of a Warrant dated the 30th
 Day of May 1792

by W^m Gray U.S.

To Daniel Brodhead Esq^r
 Survey General

IN TESTIMONY that the above is a copy of the original remaining on file in
 the Department of Internal Affairs of Pennsylvania, made
 conformably to an Act of Assembly approved the 16th day of
 February, 1833, I have hereunto set my Hand and caused
 the Seal of said Department to be affixed at Harrisburg,
 this fifteenth day of July 1905.

Loach R. Brown
 Secretary of Internal Affairs.